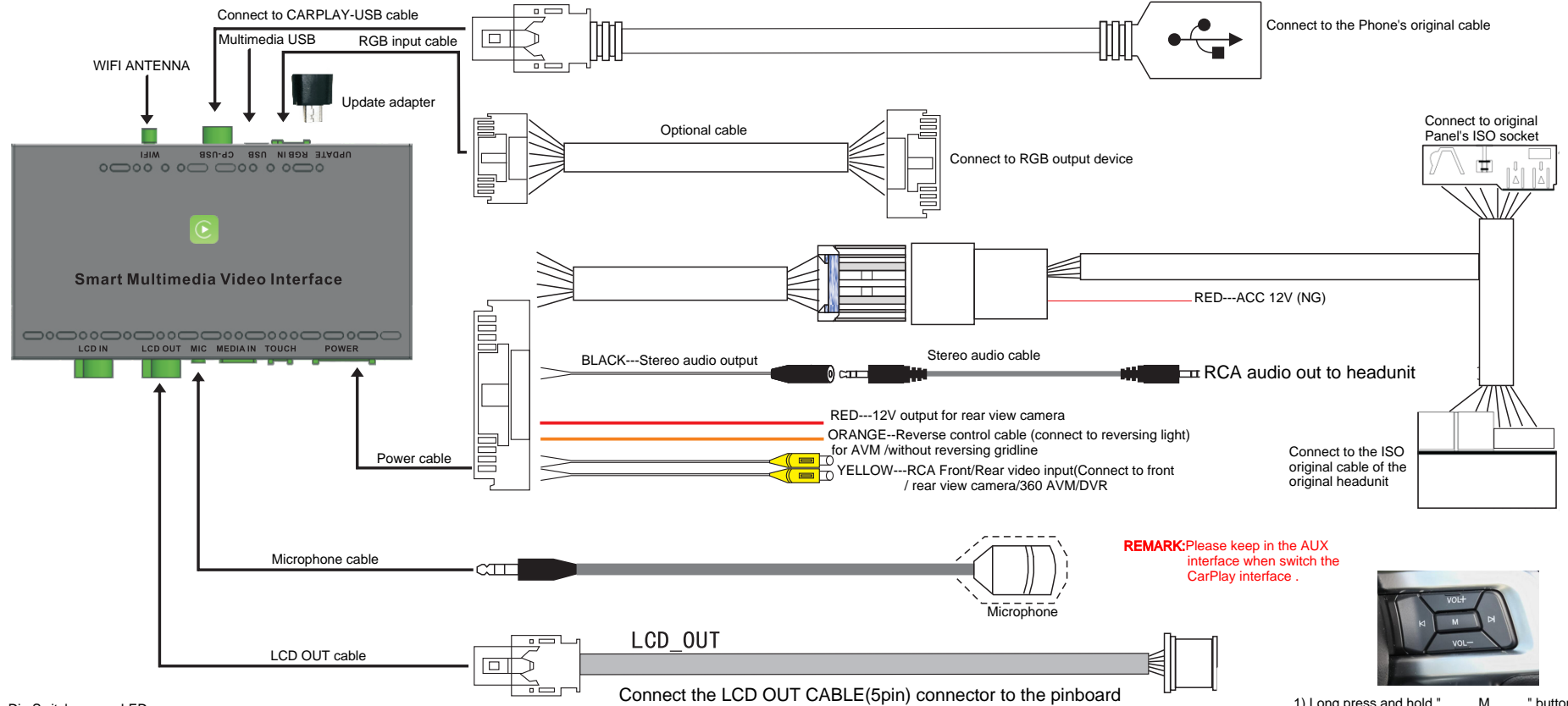


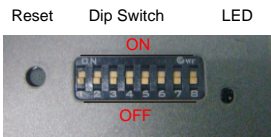
Ford Mustang (SYNC2.0) WIRING DIAGRAM ---LDS-MTSYNC2-CP



REMARK:Please keep in the AUX interface when switch the CarPlay interface .

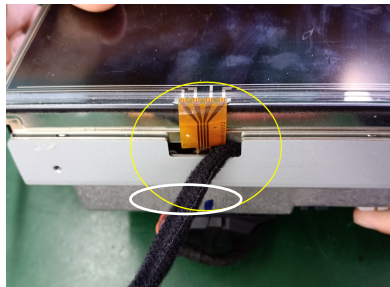


- 1) Long press and hold " M " button to switch MENU, long button again, exit the MENU.
- 2) Other functions use touch screen to control it.

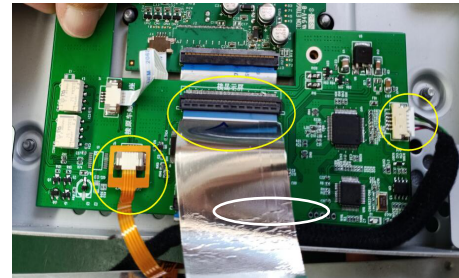


DIP SWITCH SETTING
(After changing the dip code, press "reset" or power-on again)

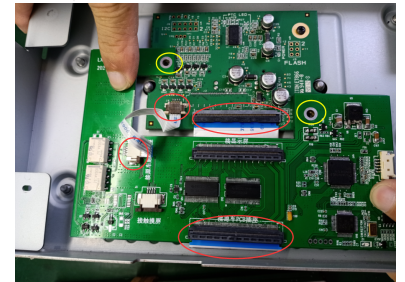
DIP	S/W	Status	Function
PIN 1		OFF/ON	
PIN 2		OFF/ON	
PIN 3		OFF/ON	
PIN 4		OFF/ON	
PIN 5		OFF/ON	
PIN 6		OFF/ON	
PIN 7		OFF/ON	
PIN 8		OFF/ON	



Step 3



Step 2



Step 1

How to install the Panel pinboard into the original panel for SYNC2.0

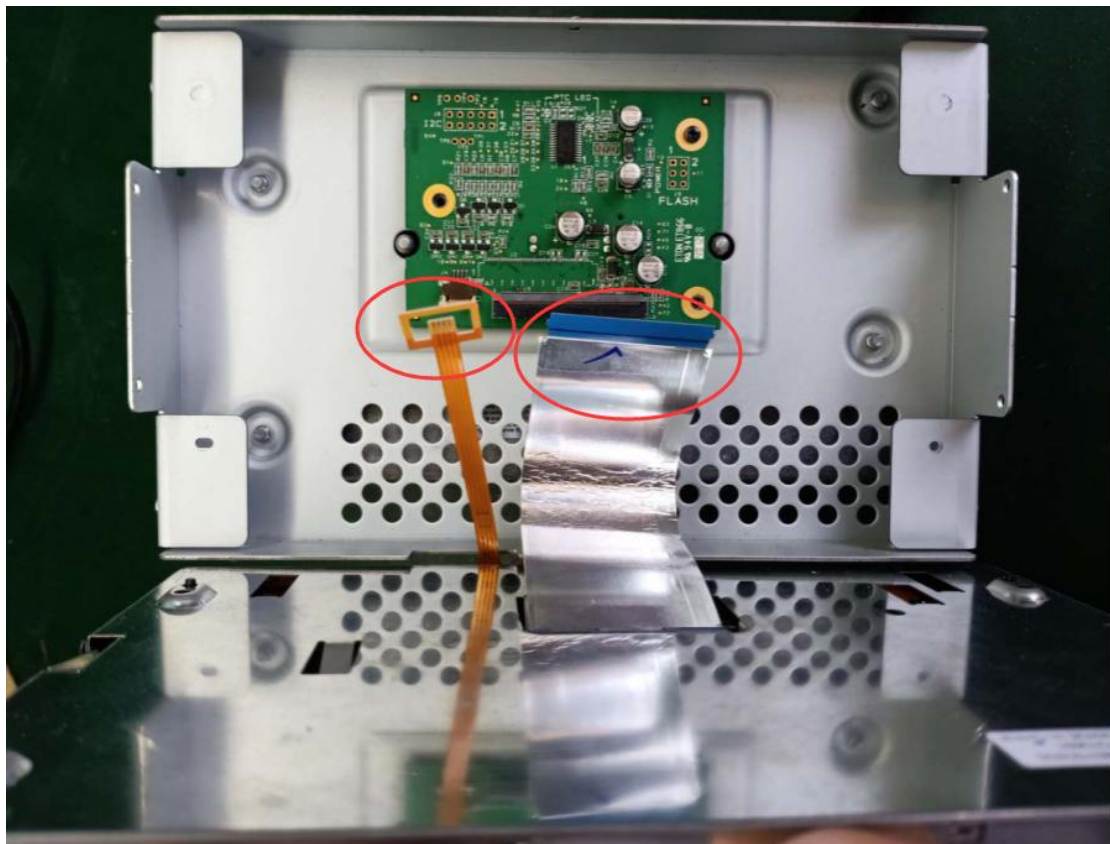
Step1:Remove the original screen



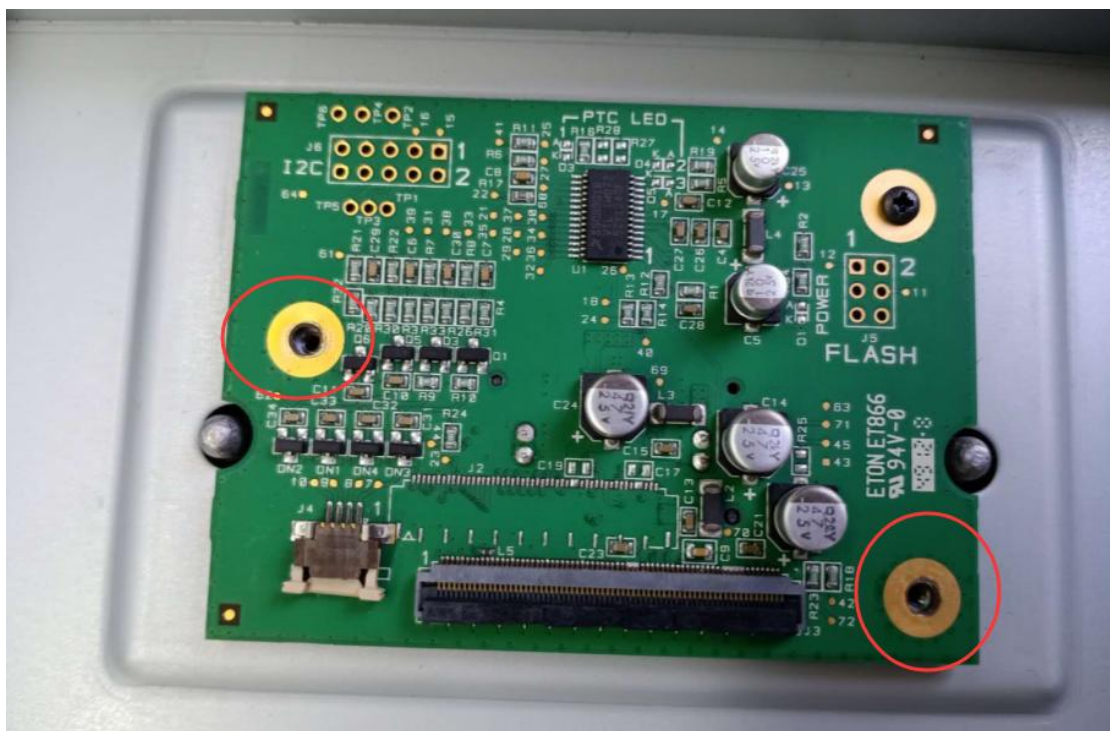
Step2:Remove the screw



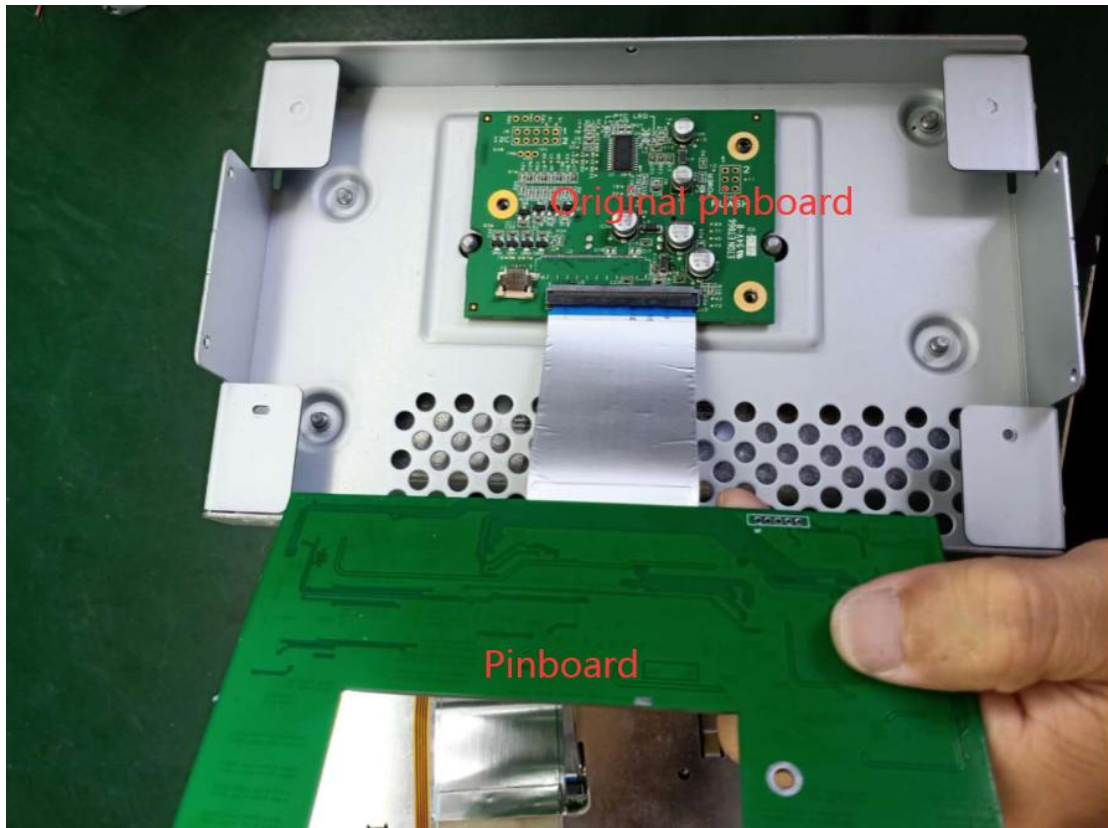
Step 3: Remove the original FPC



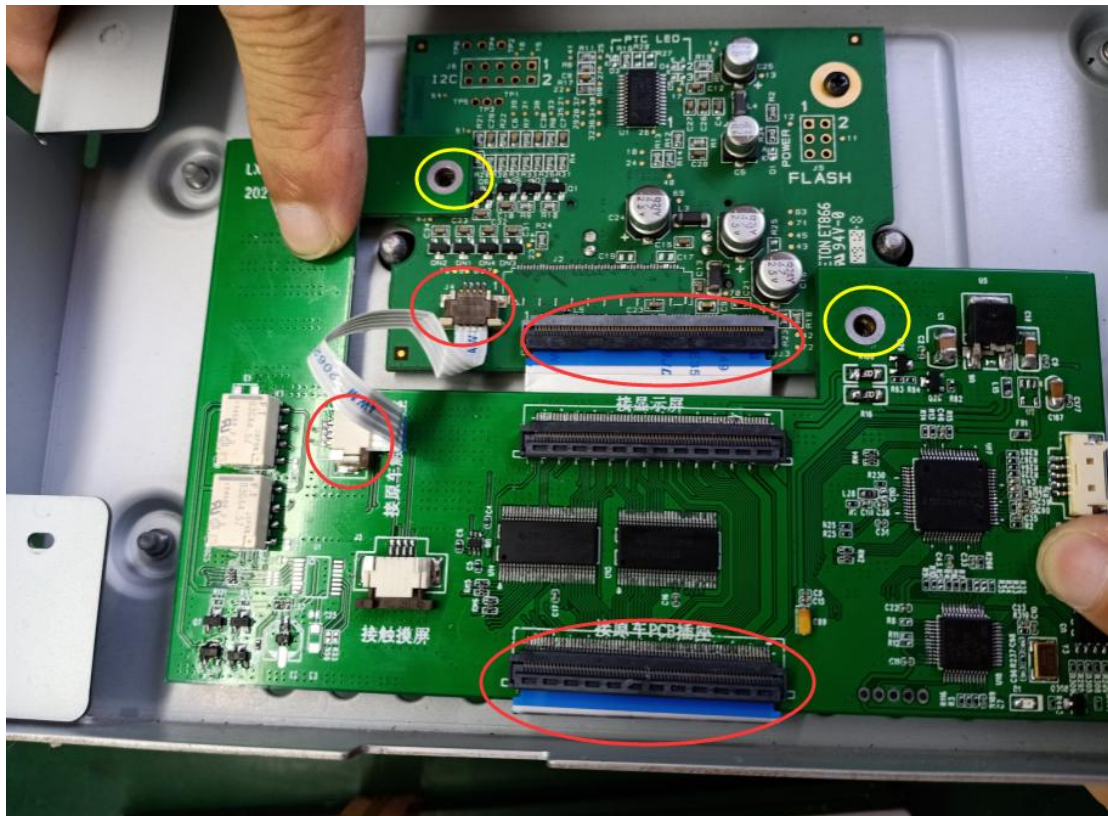
Step 4: Remove the original screw*2PCS



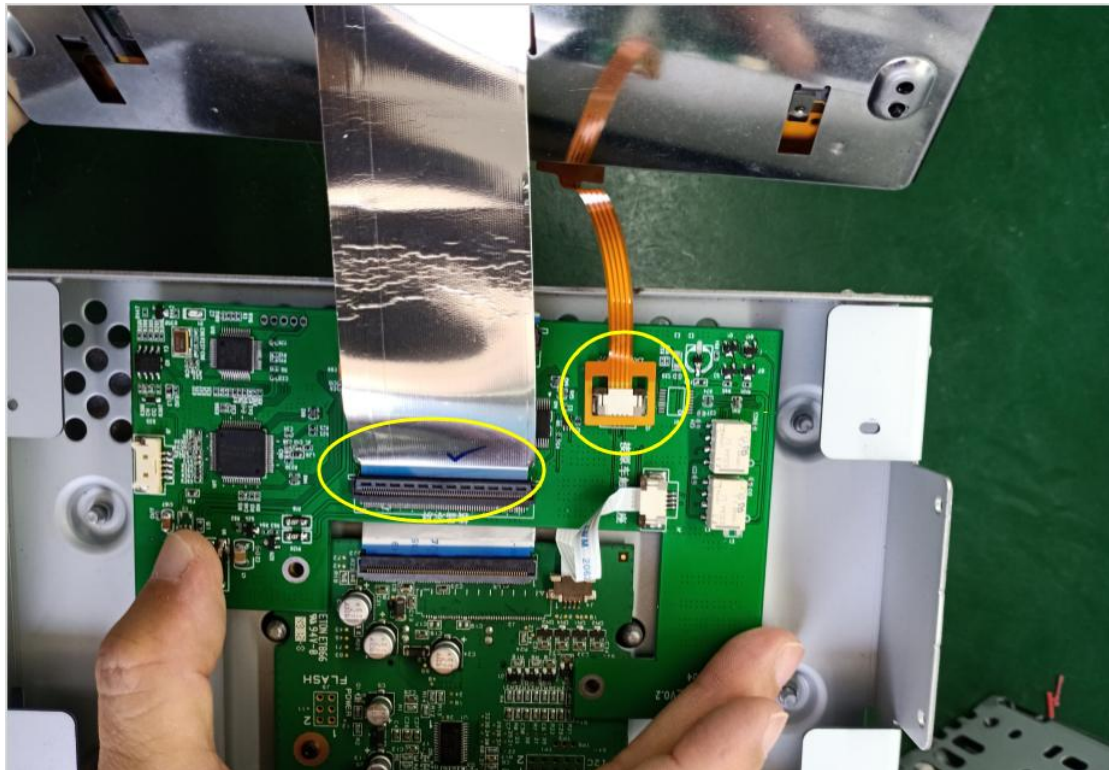
Step 5: Install the pinboard FPC cable to the original pinboard above;



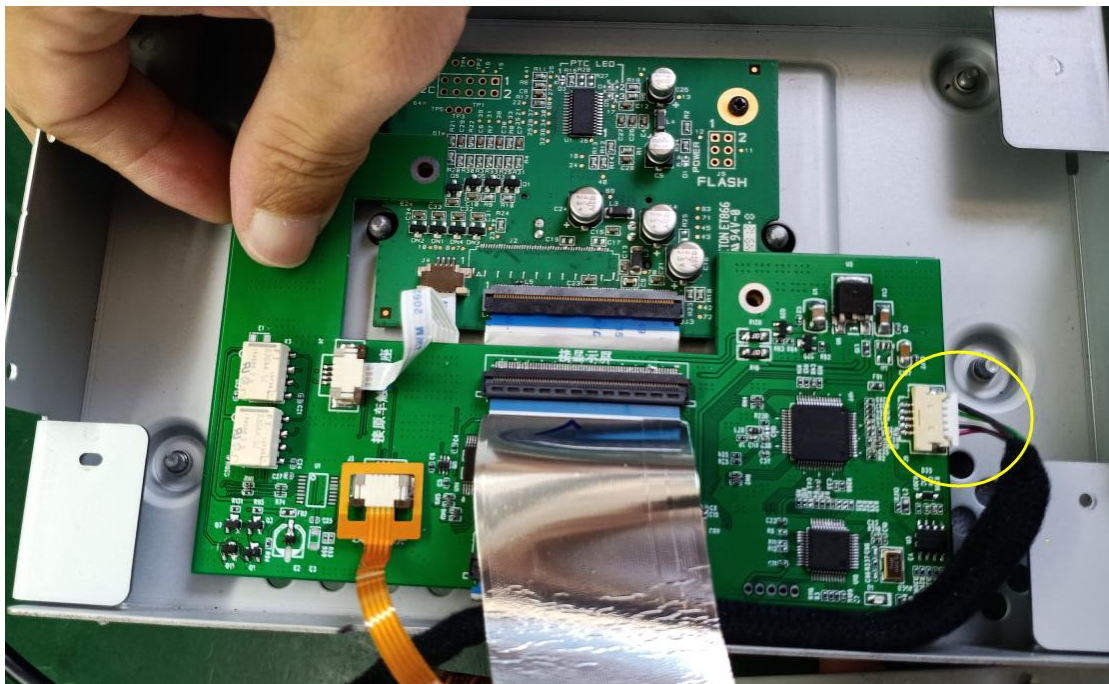
Step 6: Recover the screw*2PCS



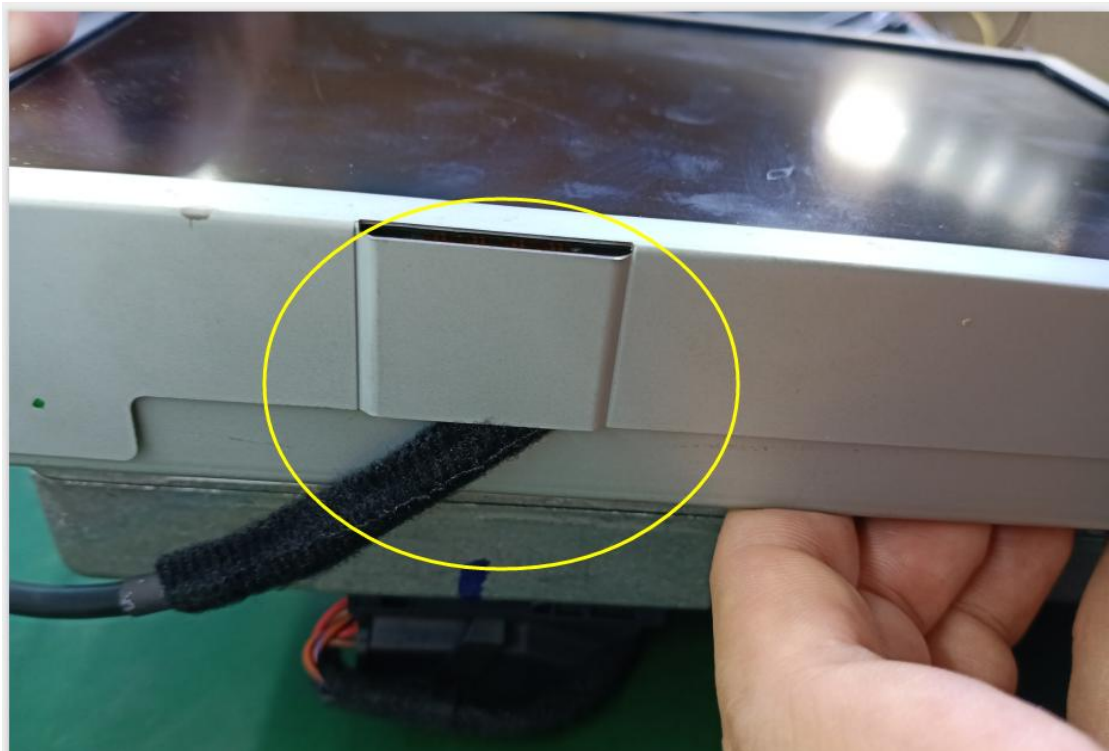
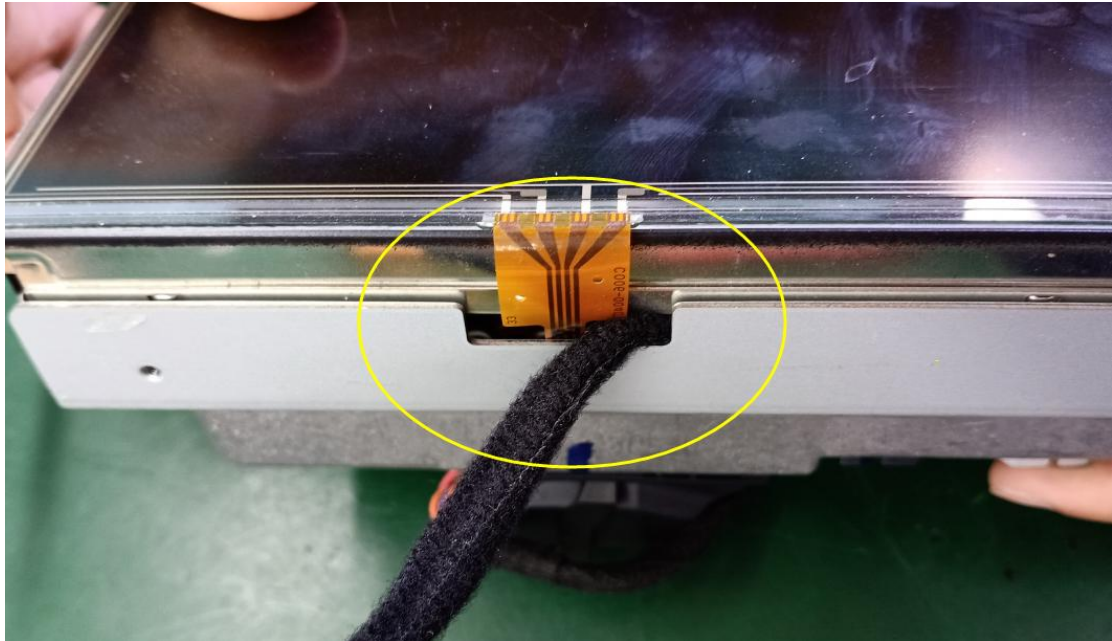
Step 7: Connect the original FPC cable the pinboard



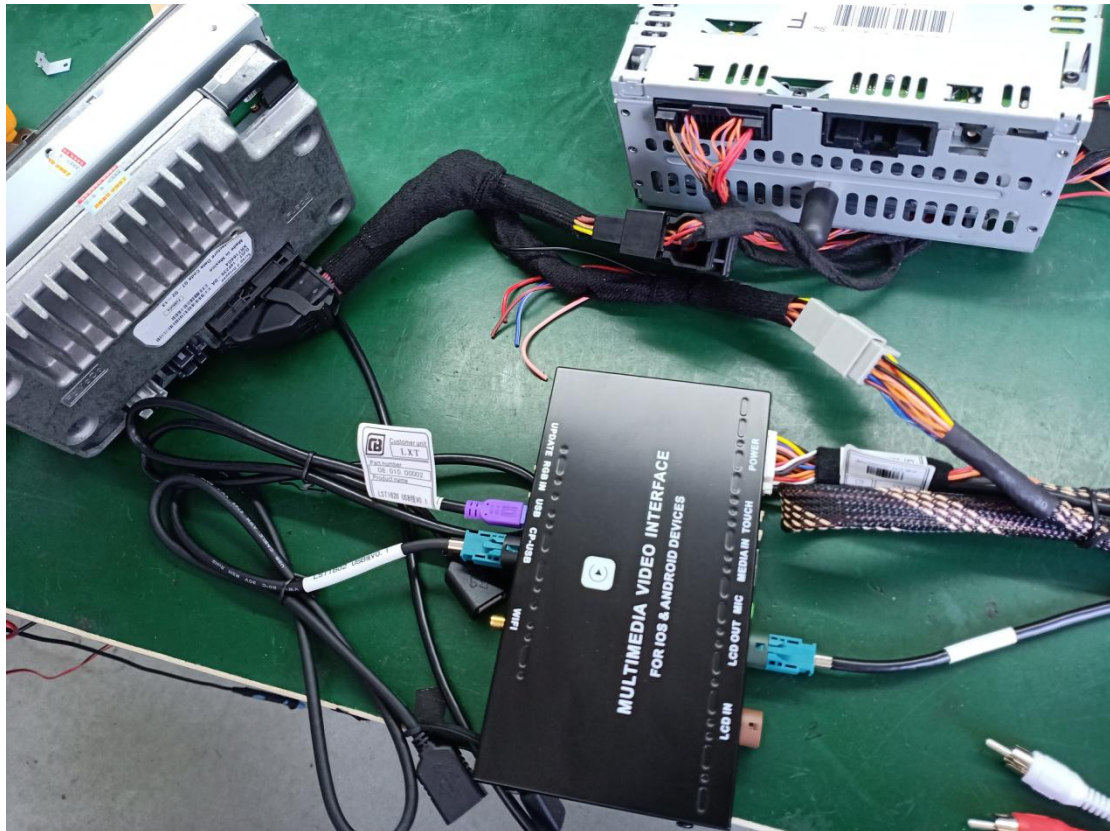
Step 8: Connect the LCD OUT CABLE(5pin) connector to the pinboard



Step 9:Recover the original panel,and the LCD OUT CABLE can flow the line as shown in the figure



Step 10. Connect the CarPlay interface box to the original panel and headunit as follow:
Pls double check the wiring diagram.



Rückfahrkamera-Einstellungen

