


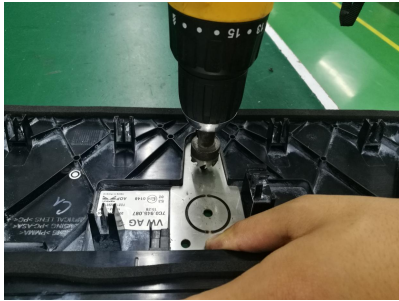


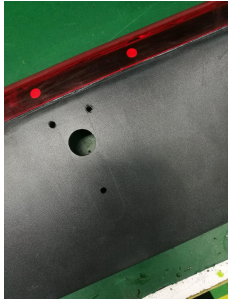


Warning: Below operations may damage the original brake light, please operate under the guidance of the professional person.

1, Preparation.

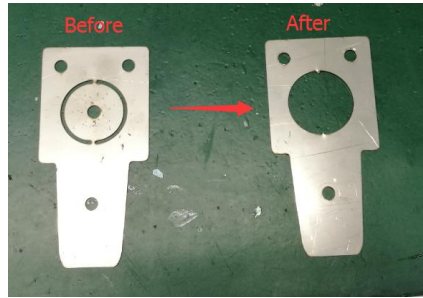
Step 1, Remove the original brake light.	Step 2, Check the accessories.	Step 3, Prepare an electric drill and a cross screwdriver.
	Camera Hole Opener Holing Plate Screws    	

2, Drill the holes on the original plastic light housing.

Step 1, Install the hole opener to the electric drill.	Step 2, Put the holing plate inside the plastic housing groove (the holing plate is perfectly matched with the housing groove), and press by hand.	Step 3, Drill 4 holes on the black plastic light housing according to the holes on the holing plate.
		
Step 4, Move away the holing plate.	Step 5, Enlarge the middle hole (only enlarge this hole).	Final performance after drilling holes.
		

3, Processing the holing plate.

Remove the middle circle part on the holing plate.



4, Install the camera to the light housng.

Step 1, Pass the camera cable through the biggest hole and fix the grommet.



Step 2, Put the camera on the light housing and put the holing plate inside the housing groove, then match the 3 holes on the light housig with the camera holes & holing plate.



Step 3, Tighten the screws.



5, Adjust the camera housing angle and mount the light with camera to vehicle.

Adjust the camera housing angle (the camera main body can be adjusted 10 degrees) to make sure the best view angle of the camera will be showed on the monitor.



Final performance of the finished brake light with camera together, can be installed to the vehicle immediately.

