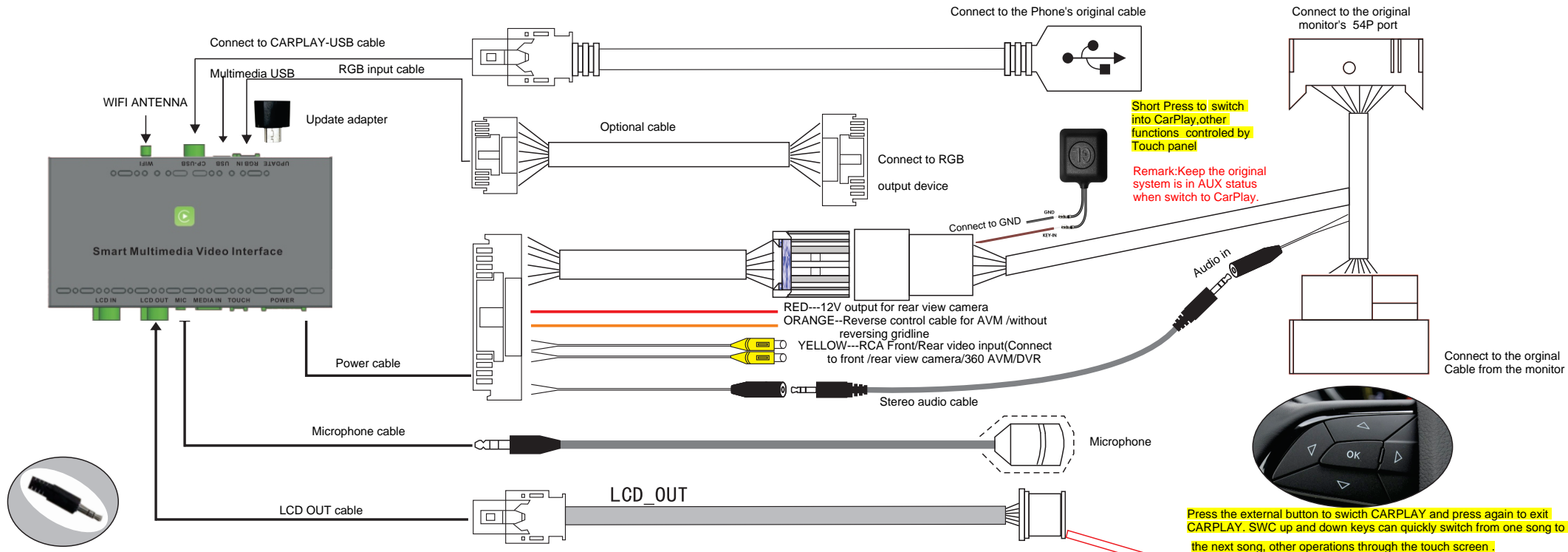
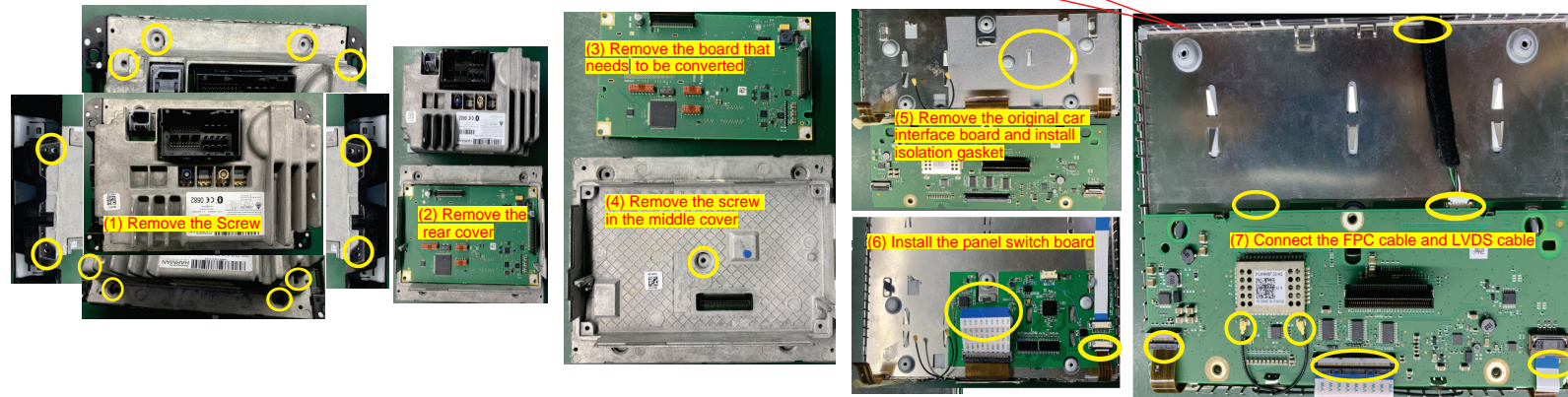
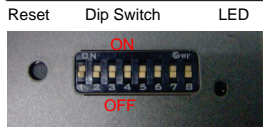


JEEP Compass/Cherokee/Commander/Grand Cherokee(2014~2020) 8.4inch Radio WIRING DIAGRAM---LDS-JP84-CP



DIP SWITCH SETTING
(After changing the dip code, press "reset" or power-on again)

PIN1	OFF/ON	NG / NG
PIN2	OFF/ON	NG / Touch point coordinate correction, and then turn "OFF"
PIN3	OFF/ON	NG/ Open front view camera
PIN4	OFF/ON	Reversing gridline/Enable 360 panoramic
PIN5	OFF/ON	NG / NG
PIN6	OFF/ON	Rear view camera CVBS input / RGB input
PIN7	OFF/ON	NG / NG
PIN8	OFF/ON	After market rear view camera/Original rear view camera



1) Remove the screw/rear cover/PCB board like the pictures (1)-(4) 13PCS in total, and then you will find the FPC cable for switch board panel and touch board.

2) As shown in the figure(5)-(7) remove the original screen FPC cable, antenna and interface board, then install isolation gasket and screen adapter board, connect the 60P cable and 8P touch cable on the original screen, restore the original interface board, original FPC cable, antenna, additional screen cable and touch cable (Note that all the cable must be inserted evenly). Finally, install LVDS Cable (Pay attention to the insertion direction and outlet position), check all interfaces, install the back cover of the original car screen.

Rückfahrkamera-Einstellungen

