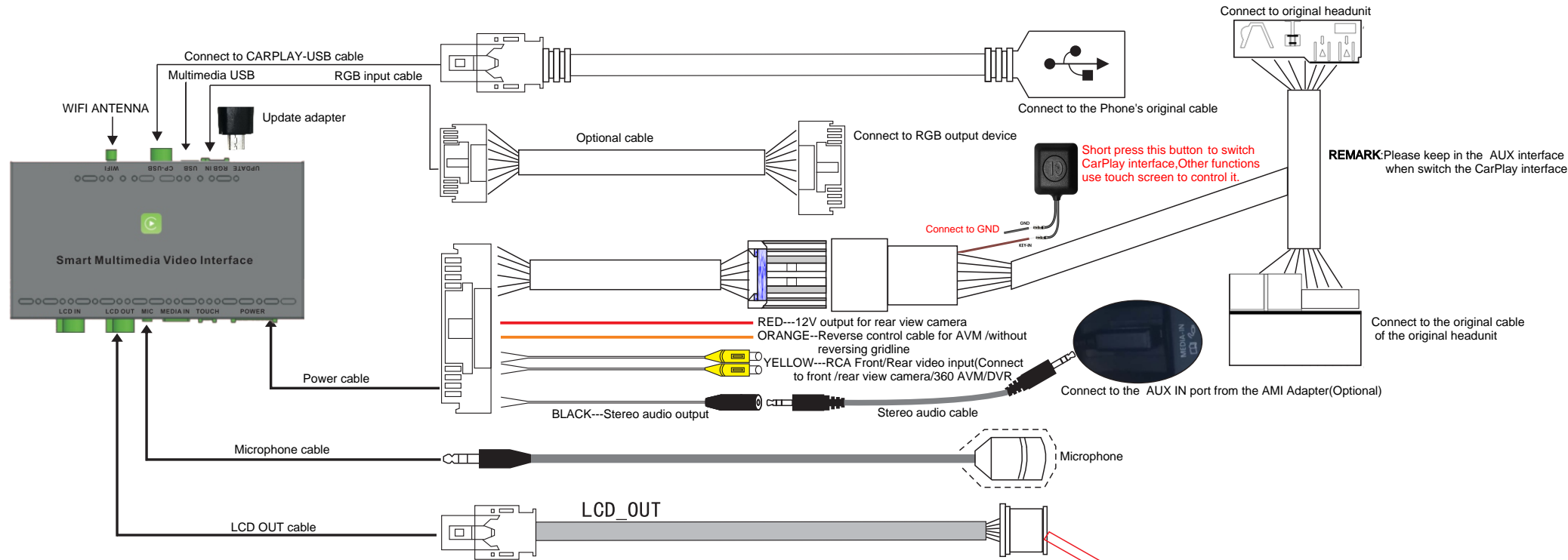
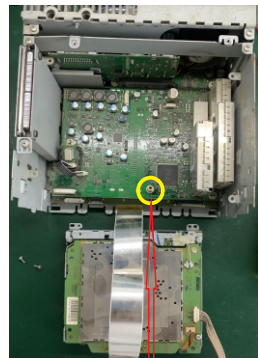
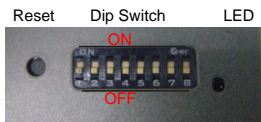


Bentley & VW Phaeton(2010~2018) VW RNS510 Radio WIRING DIAGRAM---LDS-BLY80-CP

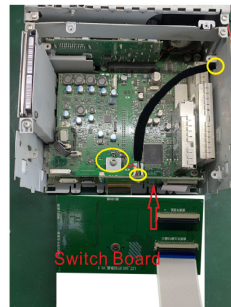


DIP SWITCH SETTING (After changing the dip code, press "reset" or power-on again)

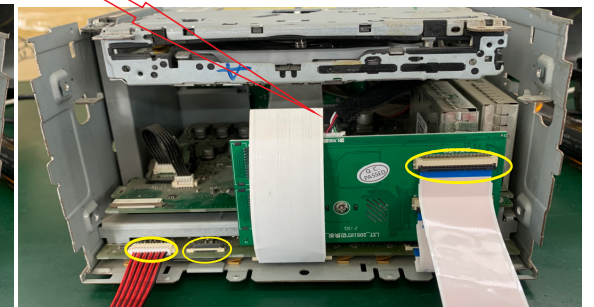
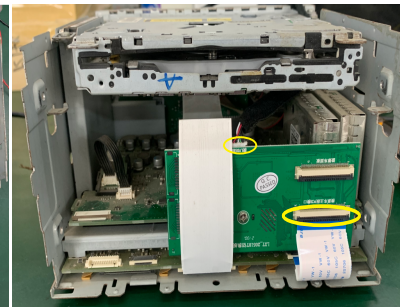
PIN 1	OFF / ON	NG / NG
PIN 2	OFF / ON	NG / Touch point coordinate correction, and then turn "OFF"
PIN 3	OFF / ON	NG / Bentley & Phaeton&RNS510 Radio
PIN 4	OFF / ON	Reversing gridline/Enable 360 panoramic
PIN 5	OFF / ON	NG / NG
PIN 6	OFF / ON	Rear view camera CVBS input / RGB input
PIN 7	OFF / ON	NG / NG
PIN 8	OFF / ON	After market rear view camera/Original rear view camera



1). After disassembling the panel, cover and the screws of the original engine, install the copper column in the position specified in the figure.



2). Insert the 50PIN and on the switching board with the original headunit, fix the switching board with the screws removed from the original headunit, and then insert the LVDS line and pay attention to the outlet position. The movement and upper cover are then installed, as shown above.



3). Insert the three lines of the original headunit's panel (50PIN FPC/12PIN/SD card cable). Then restore the panel of the headunit.
Remark: For the Bentley with original DAB function, LDS interface can also work with switch button.

Rückfahrkamera-Einstellungen

