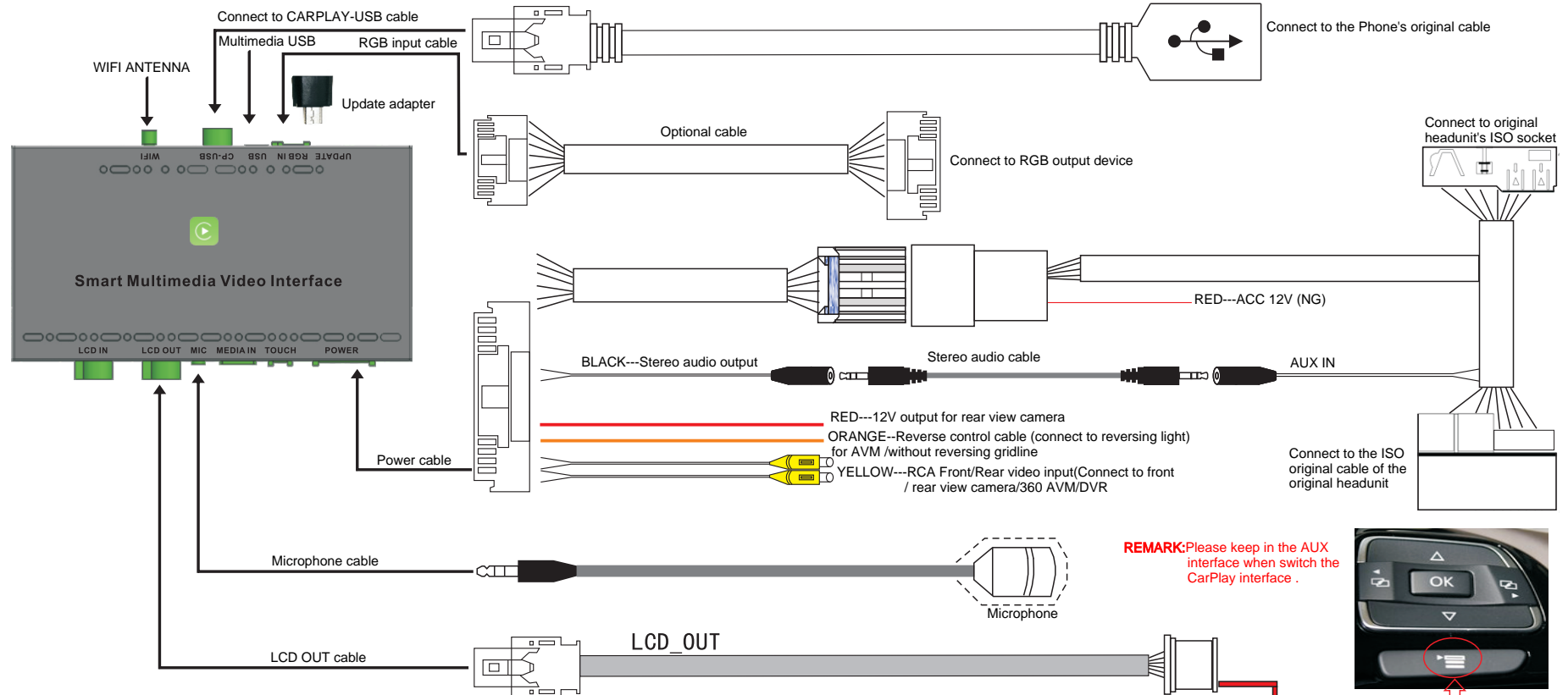


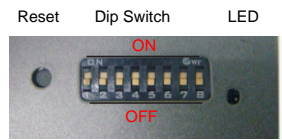
VW Touareg (6.5 inch) WIRING DIAGRAM ---LDS-VWT65-CP



REMARK:Please keep in the AUX interface when switch the CarPlay interface .

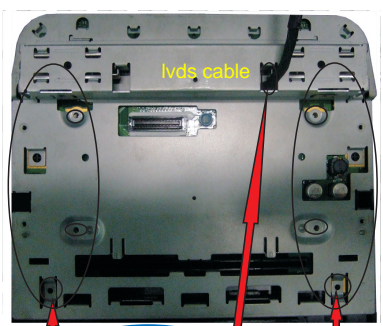


- 1) Long press and hold "MENU" button to switch MENU, long press "MENU" button again, exit the switch MENU.
- 2) Other functions use touch screen to control it.

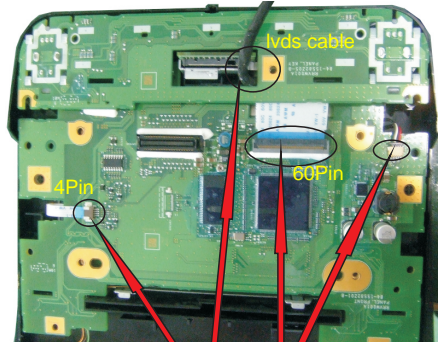


DIP SWITCH SETTING
(After changing the dip code, press "reset" or power-on again)

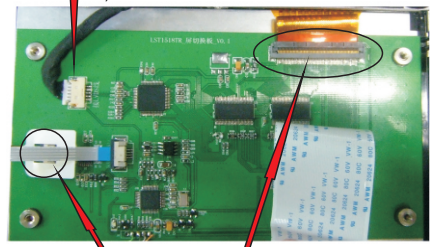
DIP	S/W	Status	Function
PIN 1	OFF/ON	NG / NG	
PIN 2	OFF/ON	NG/Touch point coordinate correction, and then turn "OFF"	
PIN 3	OFF/ON	NG / NG	
PIN 4	OFF/ON	Reversing gridline/Enable 360 panoramic	
PIN 5	OFF/ON	NG / NG	
PIN 6	OFF/ON	Rear view camera CVBS input / RGB input	
PIN 7	OFF/ON	NG / NG	
PIN 8	OFF/ON	After market rear view camera/Original rear view camera	



Step 3
4) Cover back housing and lock screws (Notice the position of the LVDS cable, as shown above).



Step 2
2) Recover the original panel board and keyboard. (Notice the position of the LVDS cable, as shown above).
3) Connect the 4P&60P cable from the pinboard to the original panel board, as shown above.



Step 1
1) Open the original monitor, and install the panel pinboard behind the original panel, plug in the panel & LCD OUT cable as shown above.
Remark: An insulating strip needs to be attached to the back of the panel pinboard

Rückfahrkamera-Einstellungen

