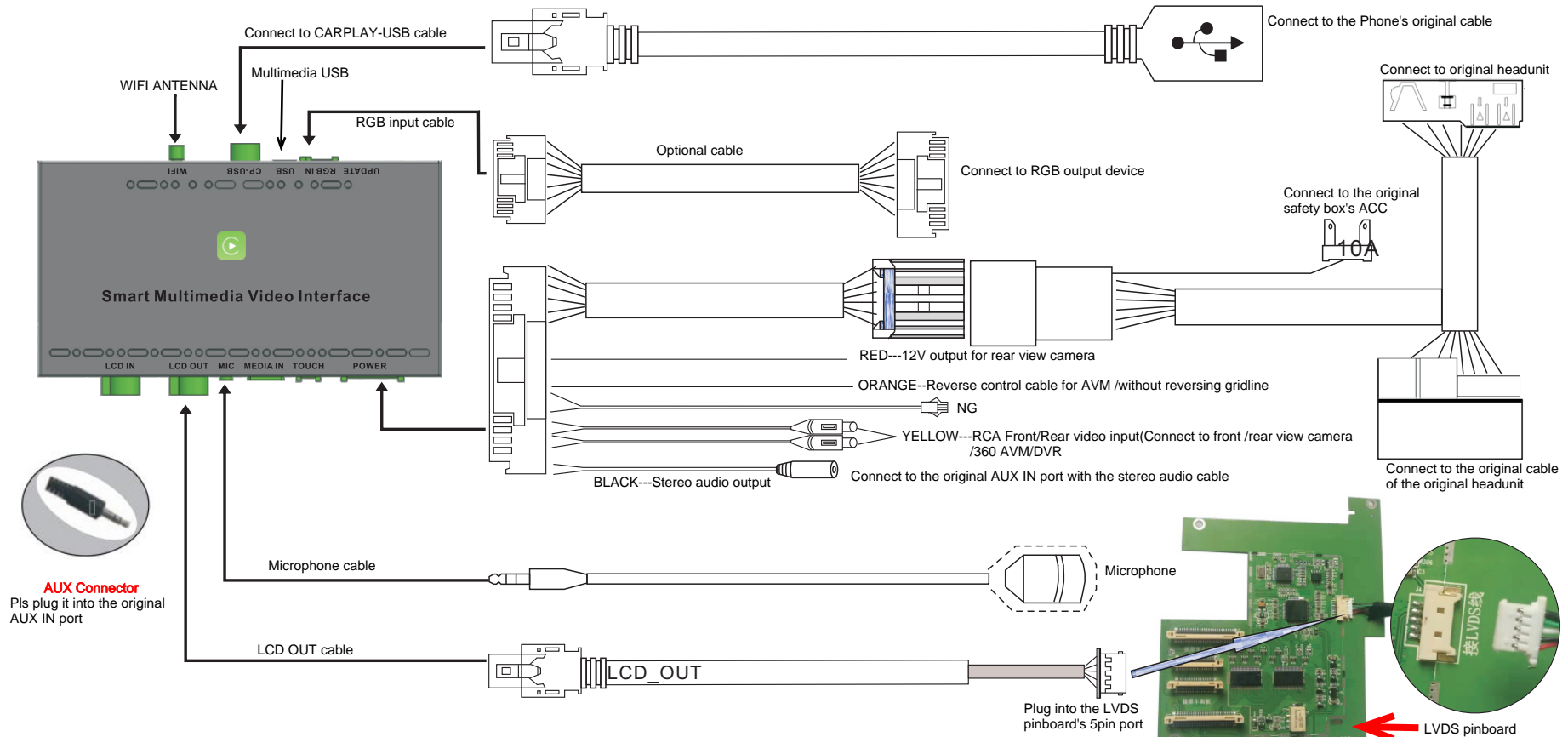


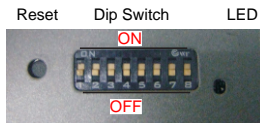
Porsche(PCM3.1-2010~2016) WIRING DIAGRAM ---LDS-PCM31-CP



DIP SWITCH SETTING

(After changing the dip code,press "reset"or power-on again)

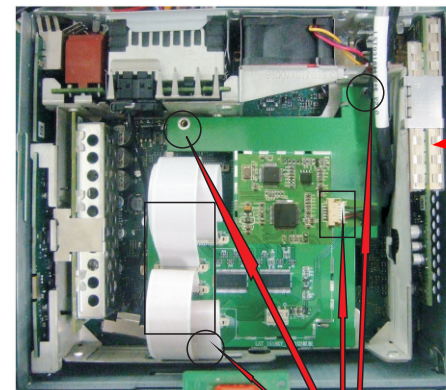
PIN 1	OFF/ON	NG / NG
PIN 2	OFF/ON	NG / Touch point coordinate correction,and then turn "OFF"
PIN 3	OFF/ON	Close front view camera/Open front view camera
PIN 4	OFF/ON	Reversing gridline/Enable 360 panoramic
PIN 5	OFF/ON	NG / NG
PIN 6	OFF/ON	Rear view camera CVBS input / RGB input
PIN 7	OFF/ON	NG / NG
PIN 8	OFF/ON	After market rear view camera/Original rear view camera



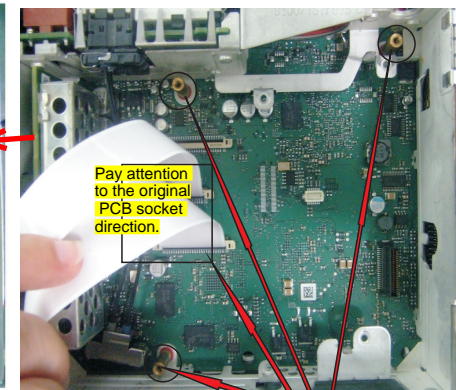
REMARK:Please keep in the AUX interface when switch the CarPlay interface



- 1) Long press and hold "NAVI" button to switch MENU, long press"NAVI" button again,exit the switch MENU.
- 2)Short press "PHONE button to open "Siri".
- 3)Knob to control up/down/right/left/ok.



- A**
- 1) Install the LVDS pinboard with the original 3pcs screws,then Plug in the 30&50pin FPC cable to the pinboard,intall the LCD OUT cable to the pinboard(The LCD OUT cable need to Insert from the rear housing of host into the interior of the host).
 - 2) Revocer the installation of the host.



- B**
- 1)Unscrew the original 3PCS screws and install 17MM copper column respectively;
 - 2)Plug in the 30PIN&50PIN FPC cable(Pay attention to the socket direction) to the original PCB board.

Rückfahrkamera-Einstellungen

