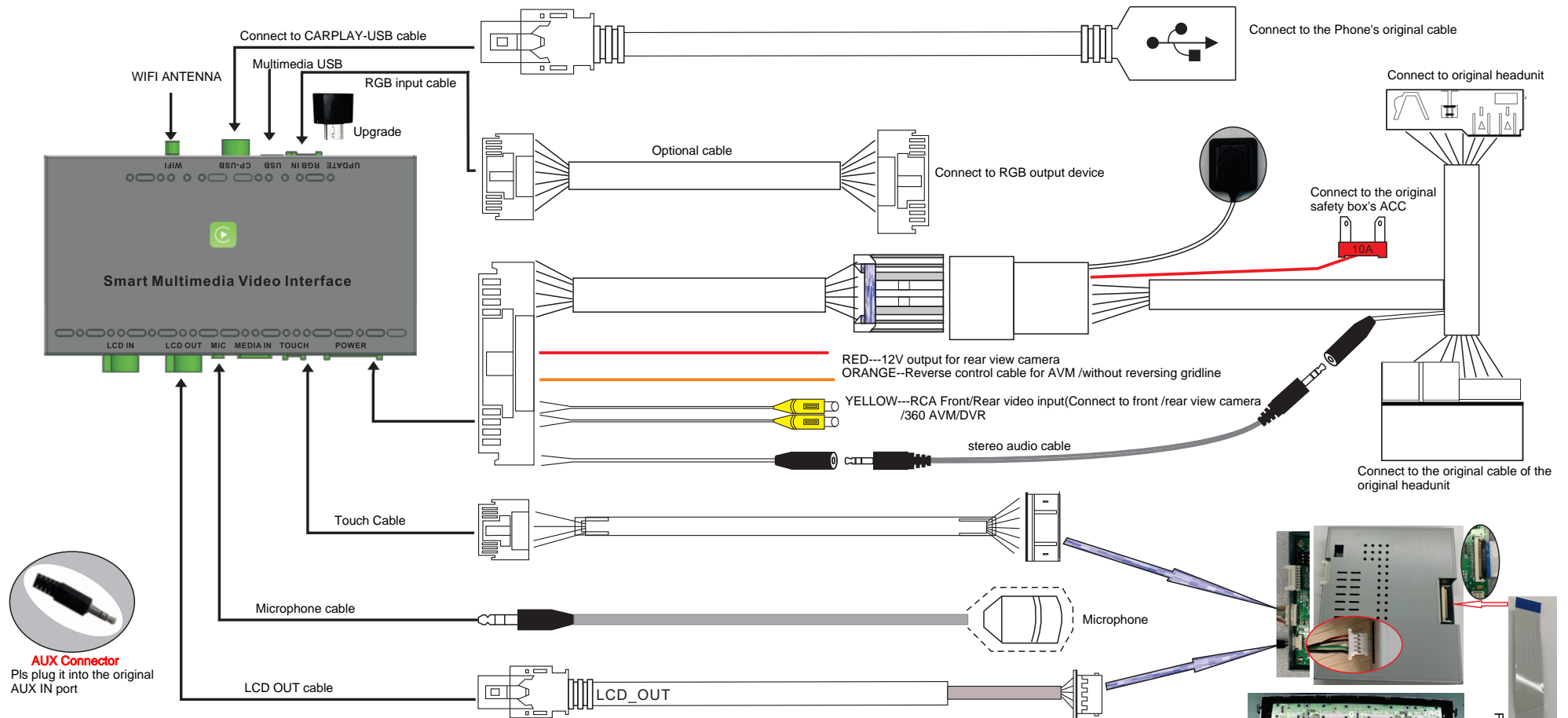


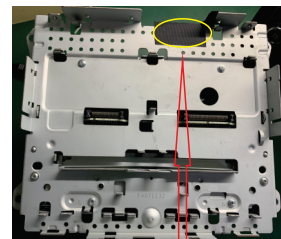
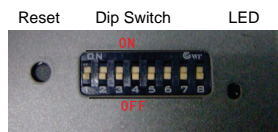
# Porsche(Bose CDR3.1-2010~2016) WIRING DIAGRAM---LDS-CDR31-CP



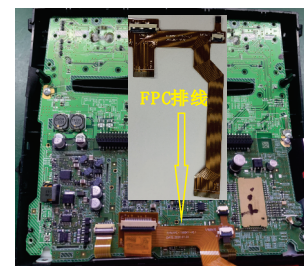
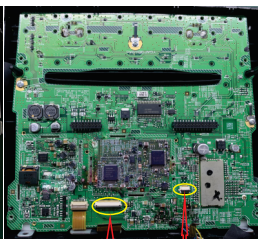
**AUX Connector**  
Pls plug it into the original AUX IN port

DIP SWITCH SETTING  
(After changing the dip code,press "reset"or power-on again)

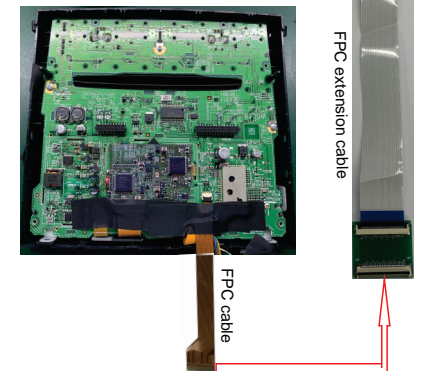
PIN 1	0FF / 0N	NG / Bose CDR31system
PIN 2	0FF / 0N	NG / Touch point coordinate correction,and then turn "OFF"
PIN 3	0FF / 0N	Close front view camera/Open front view camera
PIN 4	0FF / 0N	Reversing gridline/Enable 360 panoramic
PIN 5	0FF / 0N	NG / NG
PIN 6	0FF / 0N	Rear view camera CVBS input / RGB input
PIN 7	0FF / 0N	NG / NG
PIN 8	0FF / 0N	After market rear view camera/Original rear view camera



1) Separate the removed host and the panel, stick the protective tape at the position shown in the figure, and open the 30PIN wiring and 4PIN touch wiring of the display



2) Take out the FPC cable as shown and install it as required to avoid short circuit



3) Cover the FPC cable with tape and install the original panel, then connect the FPC extension cable to the adapter plate as shown in the picture above

# Rückfahrkamera-Einstellungen

